

KMK
logistic



Parc logistic-Mihail Kogalniceanu

CONSTANTA (Rumania)

- ◆ It is a defined area in which different operators engaged in activities relating to transport, logistics and distribution of goods, for domestic and international transit. These operators can be owners or tenants of existing buildings and facilities.
- ◆ The logistics platform must be open, in free circulation to all the companies involved in these activities, have all the equipment needed to farm groups described and recorded, if possible, common services for staff and materials users.
- ◆ To encourage intermodality in the treatment of goods, a platform should preferably be connected to different modes.
- ◆ Must be managed by a single entity, public or private.

- **SINGLE MODE OF TRANSPORTATION**

- Centers road or transport service centers
- Urban distribution centers or city-logistics
- Distribution or Distriparks Parks
- Transport facilities

- **MORE THAN A TRANSPORT MODE**

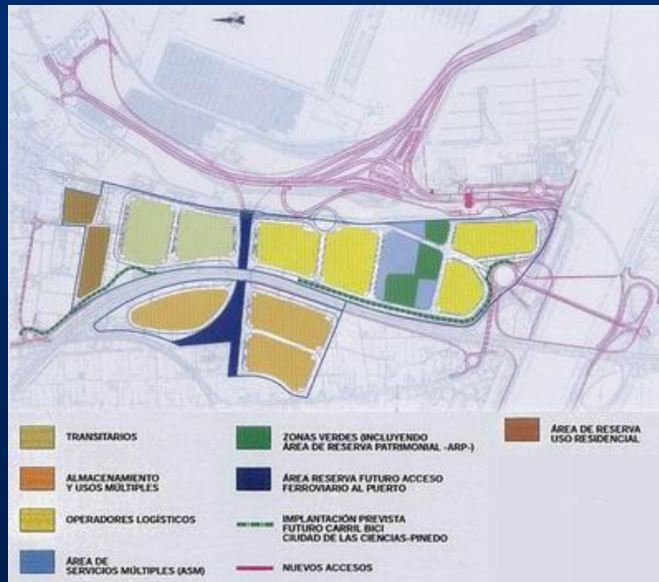
- Areas of port logistics
- Air cargo centers
- Dry ports
- **Multimodal logistics platforms**
-

Multimodal logistics platforms

Port logistics activities zone (LAZ)

Logistics platforms linked to ports, home activities second and third line logistics, usually dedicated to sea freight.

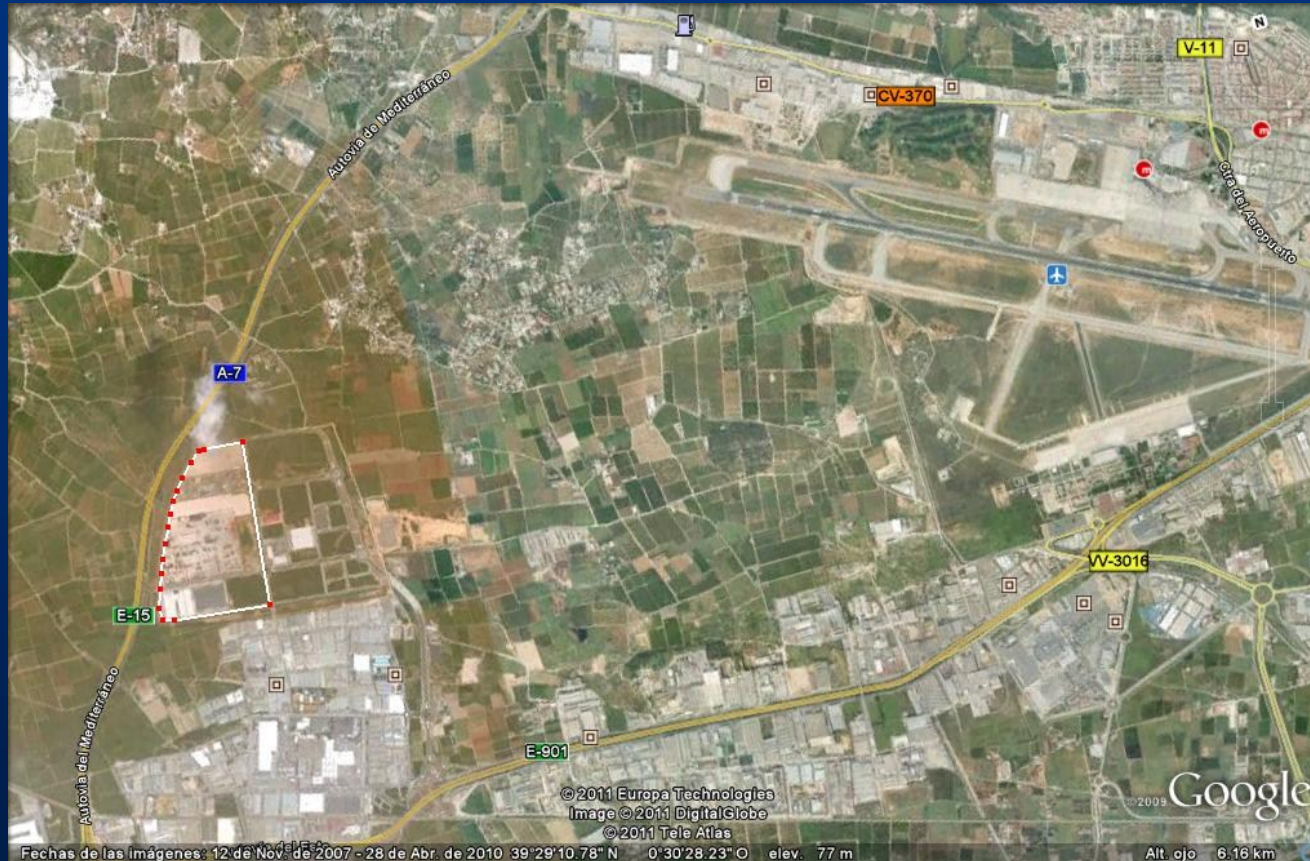
Its implementation meets the requirements of handling and distribution of maritime goods to and from the port hinterland.



Breakpoint ports modal traffic concentration and appear quickly as locations where functions are exercised value.

Multimode Logistics Platforms

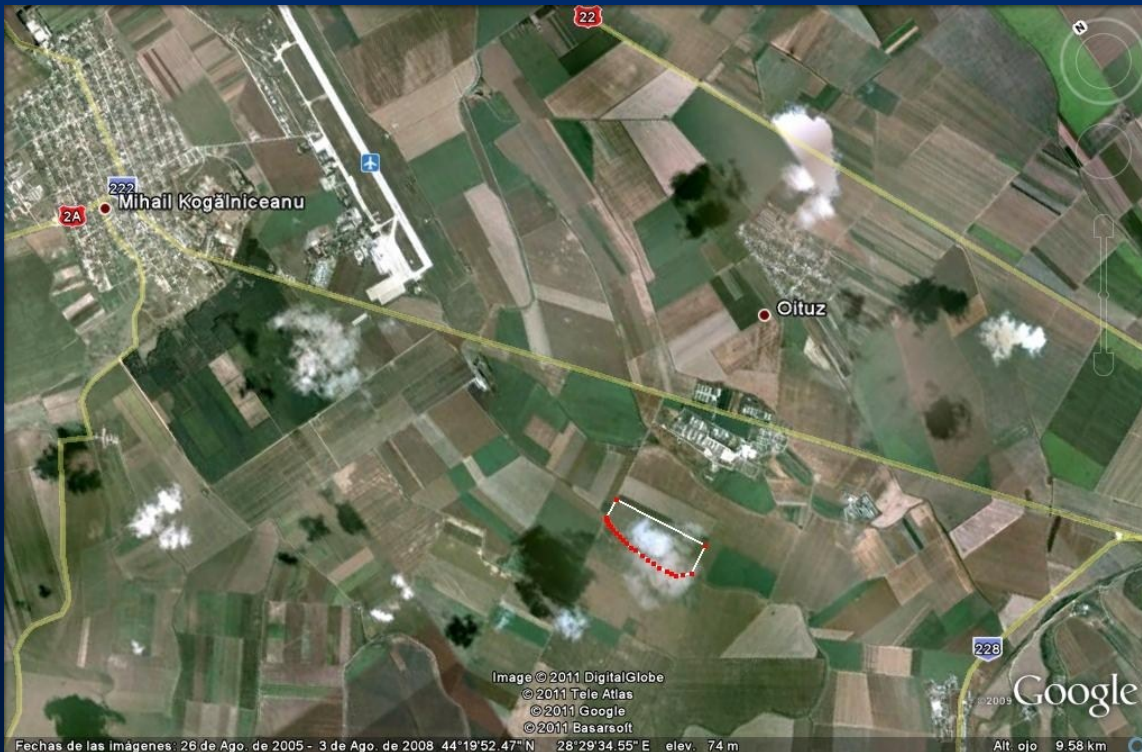
Port logistics activities zone (LAZ)



PLV

Valencia

Constanta (Romania)



Platforms specializing in
air-sea exchanges and
treatment of air cargo goods.

KMK Office Building

Platforms equipped for transshipment and storage of intermodal transport units. Requires physical space and equipment necessary for the transfer of UTI from one mode to another is done effectively and efficiently.







10 miles away

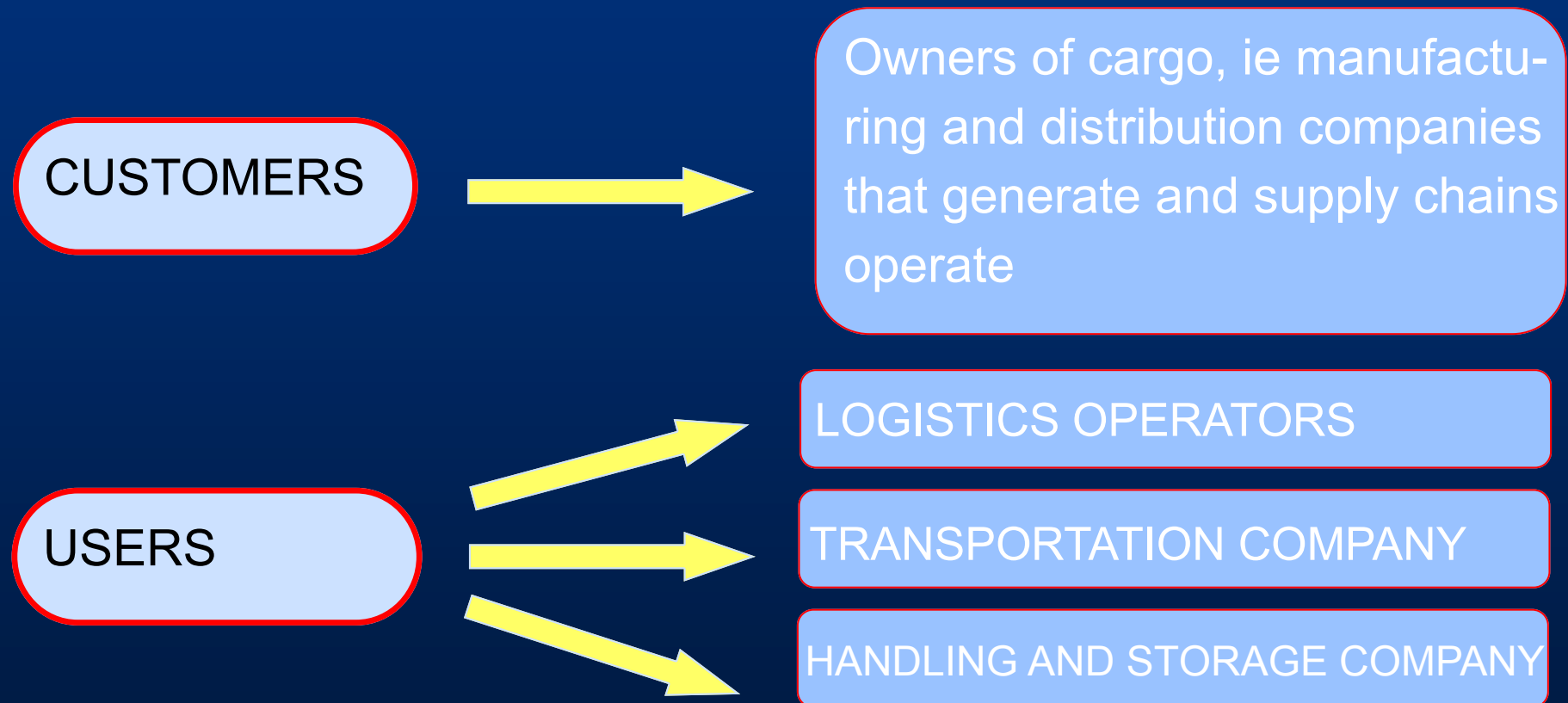
KMK
logistic

Airport CONSTANTA (Romania)

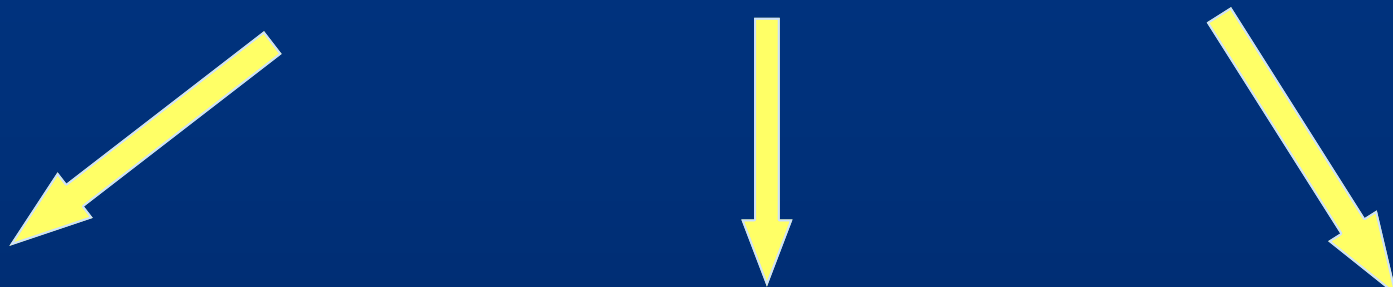


1mile away

SERVICES
PAY FOR
PLATFORMS



Functional areas of the platforms



Persons
A vehicle
Administrative and commercial
Hiring charges
Customs Services

hazardous cargo
Loads perishable
Loads high value

maintenance
Fire
physical Security

Logistics Operators
Handling and Storage Companies
Transport companies

Agrifood
Platforms



Platforms
bulk logistics



Areas
Logistics car



Regime Plat-
forms
customs



KMK
logistic

Áreas intermodal



That should provide a logistics platform

- ◆ **ESSENTIAL SERVICE**

- ◆ Rent logistics facilities (warehouses, patios, etc..).

- ◆ **ADDITIONAL SERVICES**

- ◆ Building maintenance.
- ◆ Office rentals.
- ◆ Surveillance and protection.
- ◆ Toilet and waste management.
- ◆ Tele-computing services.

- ◆ **RELATED SERVICES**

- ◆ Banking services.
- ◆ Services vehicles (parking, fuel supply, workshops).
- ◆ Weighing Services.
- ◆ Services of cafes and accommodation.

Functional areas of the platforms

• **Service Area**

- Gas Stations
- cleaning
- Workshops
- parking
- review
- restoration
- restroom
- accommodation



Proyecto poligono K M K

